

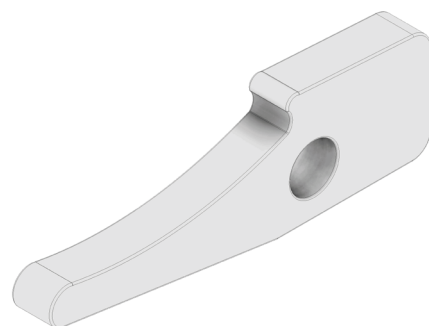
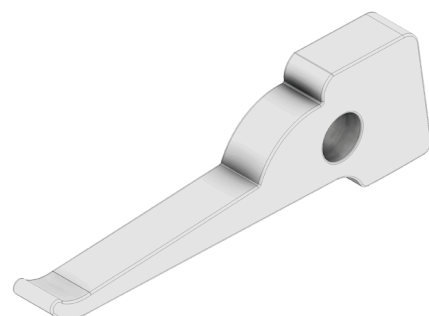
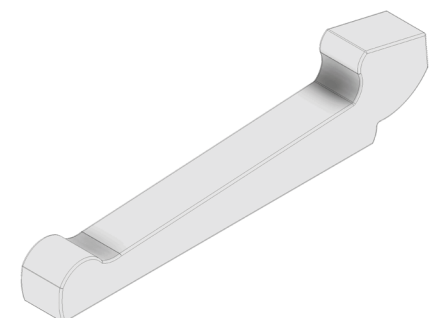
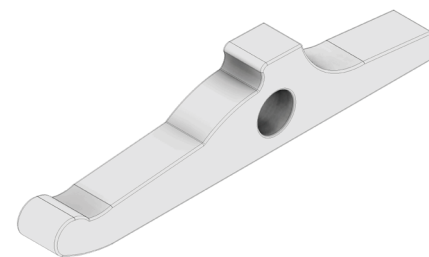
5.

DŹWIGNIE DO AUTOMATÓW TOKARSKICH

CHUCK LEVER FOR LATHES

SPANNFINGER

РУКОЯТКА ЗАЖИМНОГО ПАТРОНА



SPIS TREŚCI / INDEX	STRONA / PAGE
Dźwignie do automatów tokarskich BECHLER Chuck lever suitable BECHLER	92
Dźwignie do automatów tokarskich CITIZEN Chuck lever suitable CITIZEN	92
Dźwignie do automatów tokarskich GAUTHIER Chuck lever suitable GAUTHIER	92
Dźwignie do automatów tokarskich GILDEMEISTER Chuck lever suitable GILDEMEISTER	92 - 93
Dźwignie do automatów tokarskich HANWHA Chuck lever suitable HANWHA	94
Dźwignie do automatów tokarskich INDEX Chuck lever suitable INDEX	94
Dźwignie do automatów tokarskich MANURHIN Chuck lever suitable MANURHIN	94
Dźwignie do automatów tokarskich PETERMANN Chuck lever suitable PETERMANN	94
Dźwignie do automatów tokarskich PITTLER-DREHMA Chuck lever suitable PITTLER-DREHMA	94
Dźwignie do automatów tokarskich SCHÜTTE Chuck lever suitable SCHÜTTE	95
Dźwignie do automatów tokarskich SKODA-MAS Chuck lever suitable SKODA-MAS	95
Dźwignie do automatów tokarskich STAR Chuck lever suitable STAR	95 - 97
Dźwignie do automatów tokarskich STROHM Chuck lever suitable STROHM	97
Dźwignie do automatów tokarskich TORNOS Chuck lever suitable TORNOS	97 - 98
Dźwignie do automatów tokarskich TRAUB Chuck lever suitable TRAUB	98
Dźwignie do automatów tokarskich WICKMAN Chuck lever suitable WICKMAN	98

5

Więcej produktów znajdziesz na naszej stronie internetowej...
You will find more products on our website ...

DŹWIGNIE DO AUTOMATÓW TOKARSKICH

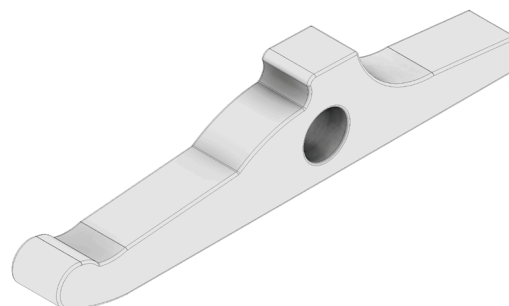
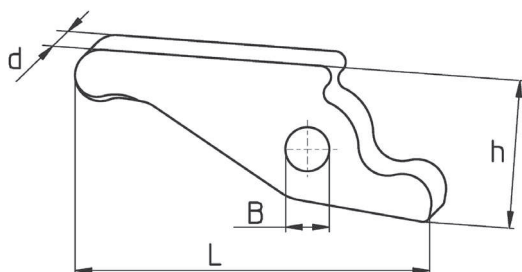
CHUCK LEVERS FOR LATHES

Dźwignie do automatów tokarskich

Chuck levers for lathes

Spannfinger

Рукоятка зажимного патрона для автоматов



Kod produktu Order Nr. Bestell-Nr. Код товара	Producent Manufacturer	Automat tokarski Automatic lathe	Nr identyfikacyjny Ident - Nr.	d (mm)	L (mm)	h (mm)	B (mm)	Kolek Pin
BECH.001	BECHLER	AS7, AS10, AR10,3mm		6	54	16	3,1	
BECH.002	BECHLER							6x32
BECH.003	BECHLER	AS7, AS10, AR10,4mm		6	54	16	4,1	
BECH.004	BECHLER							6x32
BECH.005	BECHLER	BR 20, BR 12	441 335	12	77	28,6	6	
CIT.001	CITIZEN	B 12 B-Spindel	B 12 U 50C416	4	36		4	6x22
CIT.002	CITIZEN	B12 Gegenspindel	B 312 U53 - 413	6	44		4	6x30
CIT.003	CITIZEN	B12, BS20, K16 (Mainspindle)	F 412 SC 117	8	55	20,2	6	6x40
CIT.004	CITIZEN	BS 20, K 16 B-Spindel	B 20 U 50C111	8	25,5		6	
CIT.005	CITIZEN	C 16 Haupt-/B-Spindel						6x40
CIT.006	CITIZEN	F 12, L 20	F 412 SC 117	8	55	20,2	6	6x40
CIT.007	CITIZEN	G 16		6	52	17,5	4	
CIT.008	CITIZEN	L 16 E, L 20 Hauptspind.		6	52,2		4	6x45
CIT.009	CITIZEN	L 16/20, A 20 (L=55mm #)	L 216 C114	6	55		4	5x30
CIT.010	CITIZEN	L16/20 Gegensp., L10L16/N	L 216 U41B 122	6	52,2		4	5x30
CIT.011	CITIZEN	M 20/32, L 25, C 32, A20		10	72,3	24	8	6x45
GAU.001	GAUTHIER	GM 100/127 hole 4 mm	05.03.0111	5,9	56,6	15,5	4	
GAU.002	GAUTHIER							4x24
GAU.003	GAUTHIER	GM 127 hole 5 mm	05.03.0112	5,9	56,6		5	
GAU.004	GAUTHIER							5x24
GAU.005	GAUTHIER	GM 160	75.03.7075					
GAU.006	GAUTHIER	GM 20	09.03.1041					
GAU.007	GAUTHIER	GM 25	09.03.2082	10	90		8	
GAU.008	GAUTHIER	GM 75 1-h	05.10.25	5	33,4		4	
GILD.001	GILDEMEISTER	AA 48	343-10-213/53					
GILD.002	GILDEMEISTER	AA 67	355-10-2130/055					
GILD.003	GILDEMEISTER	AS 100	347-10-2130/000	49	92,7			
GILD.004	GILDEMEISTER	AS 12		8,9	62,5			
GILD.005	GILDEMEISTER	AS 16-20	08.01.303					
GILD.006	GILDEMEISTER	AS 20 Special	200.96.301	12	80			
GILD.007	GILDEMEISTER	AS 25	341-10-2130/001	19,9	66,1	21,8		
GILD.008	GILDEMEISTER	AS 32	342-10-2130/000	23,5	73,3	23,5		
GILD.009	GILDEMEISTER	AS 32	342-10-2130/001	23,5	73,1	24		
GILD.010	GILDEMEISTER	AS 32	342-10-2130/002	23,9	73	25		
GILD.011	GILDEMEISTER	AS 32	342-10-2130/003	23,7	66,6	25		
GILD.012	GILDEMEISTER	AS 48	343-10-2130/001	29,8	80,5	24,5		
GILD.013	GILDEMEISTER	AS 48	343-10-2130/002	29,9	74,4	25,7		
GILD.014	GILDEMEISTER	AS 48	343-10-2130/003	30	75,4	25		

DŹWIGNIE DO AUTOMATÓW

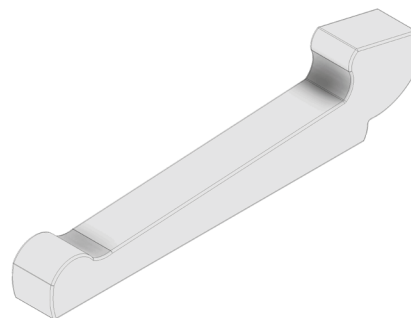
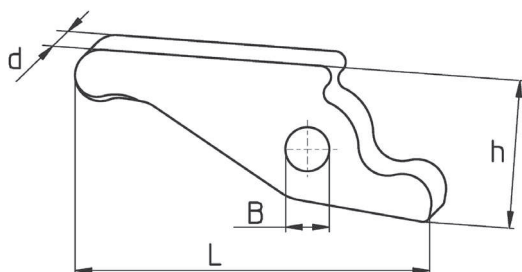
CHUCK LEVERS FOR LATHES

Dźwignie do automatów tokarskich

Chuck levers for lathes

Spannfinger

Рукоятка зажимного патрона для автоматов



Kod produktu Order Nr. Bestell-Nr. Код товара	Producent Manufacturer	Automat tokarski Automatic lathe	Nr identyfikacyjny Ident - Nr.	d (mm)	L (mm)	h (mm)	B (mm)	Kolek Pin
GILD.015	GILDEMEISTER	AS 67	355-10-2130/001	37,7	86,2			
GILD.016	GILDEMEISTER	AS 67	355-10-2130/002	37,8	87,5			
GILD.017	GILDEMEISTER	AS 67	355-10-2130/051	38	76,3			
GILD.018	GILDEMEISTER	AS 82	327-10-2130/051					
GILD.019	GILDEMEISTER	AS/AV 82	327-10-2130/002	45,9	95,5			
GILD.020	GILDEMEISTER	AV 55	AV 55-4469-2					
GILD.021	GILDEMEISTER	GM 16 AC	53.01.334-1189	8	61		8	
GILD.022	GILDEMEISTER	GM 16 AC	53.01.387-03	9	65		2,5	
GILD.023	GILDEMEISTER	GM 32	343-350-1130	19,5	106,8			
GILD.024	GILDEMEISTER	GM 35/32	35.01.130	19,5		34,5		
GILD.025	GILDEMEISTER	GM 35/8	42.01.349					
GILD.026	GILDEMEISTER	GM 42	40.01.113					
GILD.027	GILDEMEISTER	GS/GM 20	31.01.108	11,5	67,8			
GILD.028	GILDEMEISTER	GS 25/30	22.10.125	17,9	68,8			
GILD.029	GILDEMEISTER	GS 28-25/6	705-10-0017/001	17,9	68,8			
GILD.030	GILDEMEISTER	GS 35-50/6	703-10-0017/000	23,9	79,9			
GILD.101	GILDEMEISTER	GD 20	55.10.227	10	58	23,5		
GILD.102	GILDEMEISTER	GD 32	56.10.129					
GILD.103	GILDEMEISTER	GLD 12-16, GD16	55.10.107	10	53,5	28,6	7	
GILD.104	GILDEMEISTER	GLD 20-25-32	54.10.119	10	58	25	7	
GILD.105	GILDEMEISTER	Pin to GLD 20-25-32 (7x42,5)	54.10.117					
GILD.106	GILDEMEISTER	GM 26 AC	41.01.193					
GILD.107	GILDEMEISTER	GM 35 Spezial	37.01.158					
GILD.108	GILDEMEISTER	GM 35/8, GMC 35	42.01.293	15,5	95,5	29,8		
GILD.109	GILDEMEISTER	GMC 20 S	51.01.284	11,8	65,5	22,1		
GILD.110	GILDEMEISTER	MSL	60.10.92					
GILD.111	GILDEMEISTER	MSL 42/60	94.10.123					
GILD.112	GILDEMEISTER	MSL 60/7	56.10.322	10	55		7	
GILD.113	GILDEMEISTER	Speed 12	20.10.136	10	56,4		7	
GILD.114	GILDEMEISTER	Speed 20 H-/Gegensp.	21.10.141					
GILD.115	GILDEMEISTER	Speed 20-8 Gegenspindel	20.10.136					
GILD.116	GILDEMEISTER	Sprint 20	21.10.141					
GILD.117	GILDEMEISTER	Sprint 32	54.10.254					
GILD.118	GILDEMEISTER	Sprint 32 Linear	56.10.322					
GILD.119	GILDEMEISTER	Sprint 32/42	26.10.196					
GILD.120	GILDEMEISTER	Sprint 42 Gegenspindel	56.10.322					
GILD.121	GILDEMEISTER	Sprint 42 Hauptspindel	26.10.123	13	99,4	32	10	
GILD.122	GILDEMEISTER	Sprint 50 linear	94.10.123					

DŹWIGNIE DO AUTOMATÓW TOKARSKICH

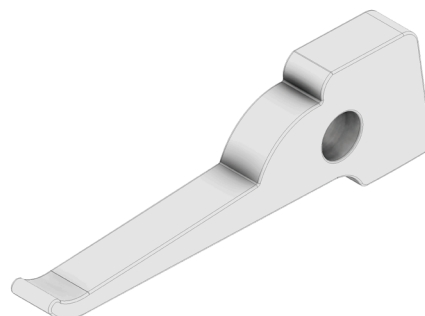
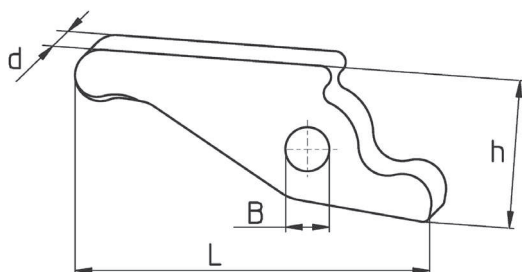
CHUCK LEVERS FOR LATHES

Dźwignie do automatów tokarskich

Chuck levers for lathes

Spannfinger

Рукоятка зажимного патрона для автоматов



Kod produktu Order Nr. Bestell-Nr. Код товара	Producent Manufacturer	Automat tokarski Automatic lathe	Nr identyfikacyjny Ident - Nr.	d (mm)	L (mm)	h (mm)	B (mm)	Kolek Pin
HAN.001	HANWHA	HANDEX 17 XD 20, SL20S	BSS3000-021					
HAN.002	HANWHA	HANEX 17, ML 12	NPS 7000-019					
HAN.003	HANWHA	HANEX 25, ML 20/26, XD 20	SSS7000-012					
HAN.004	HANWHA	HANEX 25, ML26, SL26S/H	SSS3000-015					
HAN.005	HANWHA	SL 12, XD 12 Hauptspindel	3184-M010-1130 NPM					
HAN.006	HANWHA	SL 12 Se/S/H, SL 16	BSS 7000 004					
HAN.007	HANWHA	STL 32J/H Main-/Subspindel	SST 11000-022					
HAN.008	HANWHA	XD 26 H Gegenspindel	DA15000-005					
HAN.009	HANWHA	XD 26 H Hauptspindel	SM 02026-001					
HAN.010	HANWHA	XD 32 H Main-/Subspindle	CA 11000-013A					
HAN.011	HANWHA	XP 12; ML12 – Hauptsp	XOS3000-015					
IND.001	INDEX	DG, ON, OR	AA1371	11,8	66,1	17,2		
IND.002	INDEX	A 12, ER 16	A33280	11,5	74,2	20		
IND.003	INDEX	C19, A 25-18, ER 25, KR 30	A43280	13,5	74,2	20		
IND.004	INDEX	C 29	C29591	15,3	74,2	20		
IND.005	INDEX	B 30-24	A53283	15,4	100	24,2		
IND.006	INDEX	B 36-42-52-60	A73281	19,9	100,1	24,2		
MAN.001	MANURHIN	PF 16-22-25-32 TR	4882	11,8	70,6	24	7	
MAN.002	MANURHIN	PF 25 Achse/axis						7x48
MAN.003	MANURHIN	PF 42-36	1770	15,7	92,2	32,5	10	
MAN.004	MANURHIN	PF 60-80-52	6298	19,8	95,2		10	
MAN.005	MANURHIN	Combimat 42-60-80		17,7	105		10	
MAN.006	MANURHIN	"Spannmuffe Combimat						
PET.001	PETERMANN	P 4		6	35	14,2	3	
PET.002	PETERMANN	P 7		7	55	16,2	4	
PET.003	PETERMANN	P 7 R		7	68	19	4	
PET.004	PETERMANN	P 7 R		7	68	19	5	
PET.005	PETERMANN	P 3		4	37,5		3	
PET.006	PETERMANN	P 16		10	99	22	5	
PIT.001	PITTLER-DREHMA	PRC 32		19,8	91,3		10	
PIT.002	PITTLER-DREHMA	PRC 36		20	87,9		10	
PIT.003	PITTLER-DREHMA	PRC 72-100	16.230.420.1	28	120		14	
PIT.004	PITTLER-DREHMA	PRC 50 4 / 6 / 8	16.222.373.1	26	117	28	12	
PIT.005	PITTLER-DREHMA	DAR 63 / 71		25	82		10	
PIT.006	PITTLER-DREHMA	DAR 46		25	84		7,5	
PIT.007	PITTLER-DREHMA	PRC	10.222.0770.2	10	38,5		8	
PIT.008	PITTLER-DREHMA	DAM 32/6/8		22	91		11	
PIT.009	PITTLER-DREHMA	PRC 25/8, 36/6	16.222.589.1	20	87,7		10	
PIT.009	PITTLER-DREHMA	PRC 25/8, 36/6	16.222.589.1	20	87,7		10	

DŹWIGNIE DO AUTOMATÓW TOKARSKICH

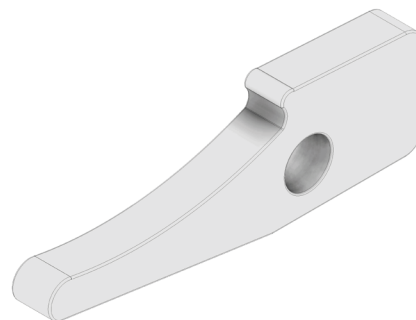
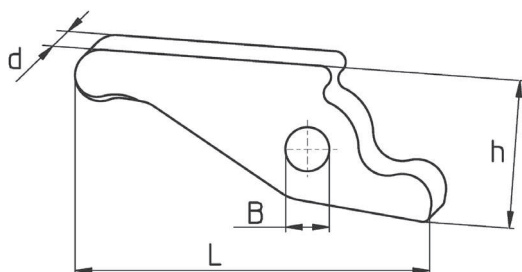
CHUCK LEVERS FOR LATHES

Dźwignie do automatów tokarskich

Chuck levers for lathes

Spannfinger

Рукоятка зажимного патрона для автоматов



Kod produktu Order Nr. Bestell-Nr. Код товара	Producent Manufacturer	Automat tokarski Automatic lathe	Nr identyfikacyjny Ident - Nr.	d (mm)	L (mm)	h (mm)	B (mm)	Kolek Pin
SCH.001	SCHÜTTE	SB 16 with hole	SB16890b	9,9	60		8	
SCH.002	SCHÜTTE	SB 16	SB16890d	13	66,2			
SCH.003	SCHÜTTE	SB 22	V22R890	15	73,9		8	
SCH.004	SCHÜTTE	SB 30, SB 35	V35R890	17,9	93,5		10	
SCH.005	SCHÜTTE	SB 35	SB35890	18	93	26,2	10	
SCH.006	SCHÜTTE	SB 42	SB42D890A	18	83,5			
SCH.007	SCHÜTTE	AD 40	AD40D390A	17,9	94,4			
SCH.008	SCHÜTTE	SD 25-32	VD32D390A	17,9	93,8			
SCH.009	SCHÜTTE	SD 50-63-80	VD63D390A	20	121,2			
SCH.010	SCHÜTTE	SD 89	VD63D390A/1	19,9	117,3			
SCH.011	SCHÜTTE	SE 16-18	SE16D390B	13,4	58	18		
SCH.012	SCHÜTTE	SE 25-26	SE25D390A	13,4	59,2	18,5		
SCH.013	SCHÜTTE	SF 13	C3220-B-00SZ	9,5	55,6			
SCH.014	SCHÜTTE	SF 20	C3220-B-11SZ	11,5	63,1			
SCH.015	SCHÜTTE	SF 26 A	C3220-B-11SL	13,7	65,1			
SCH.016	SCHÜTTE	SF/AF 26-32	C3220-A-23Z	17,5	92,2			
SCH.017	SCHÜTTE	SF 26-32	C3220-B-23Z	17,5	92,2			
SCH.018	SCHÜTTE	SF/AF 26-32 N	C3220-C-23Z	17,5	92,2			
SCH.019	SCHÜTTE	SF 40-42-51	C3220-A-44SZ	17,5	106			
SCH.020	SCHÜTTE	SF 42, SF 51	C3220-B-45Z	17,6	105			
SCH.021	SCHÜTTE	SF/AF 67-81	C3220-B-66Z	18,6	111			
SCH.022	SCHÜTTE	SF 81/ SF 67	C3220-A-67SZ	18,4	111,2			
SCH.023	SCHÜTTE	SF 100	C3220-77-SL	18,5	105,6			
SCH.024	SCHÜTTE	SFH 160	C3220-C-44SF	11,8	88,8		6	
SCH.025	SCHÜTTE	SF 26 L	C3220-C-11SL					
SCH.026	SCHÜTTE	SG 18 / AG 20	B3220-A-G1SZ	11,8	65			
SCH.101	SCHÜTTE	SE 25	SE25-C-2538A					
SCH.102	SCHÜTTE	SE 16	SE16-C-2538A					
SCH.103	SCHÜTTE	SFH 160	C3220-C-44SF					
SCH.104	SCHÜTTE	SF 20 DNT	D3320-A11F					
SCH.105	SCHÜTTE	SF 20 DNT	C3220-D-11SZ					
SCH.106	SCHÜTTE	AD 40	C3320-A-55Z					
SKO.001	SKODA-MAS	A 12, A 20 B MAS	3211512E4L28	13,5	74,1			
SKO.002	SKODA-MAS	A 40 MAS	321 1508	20	105,5			
SKO.003	SKODA-MAS	A 32-40-50 CA MAS 42	338 4022 E1	16	71,8		12	
STA.001	STAR	ECAS-20	540-39-600/620	10	67		8	8x50
STA.002	STAR	ECAS-32T	580-320-70	12	89,7		8	8x48
STA.003	STAR	ECAS-32T A48	580-840-70	12	77		8	8x48
STA.004	STAR	JNC 16	025-32-060/080	10	72,5		6	6x46

DŹWIGNIE DO AUTOMATÓW TOKARSKICH

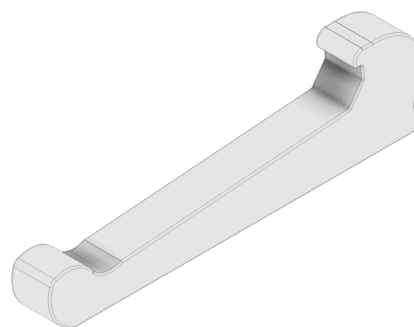
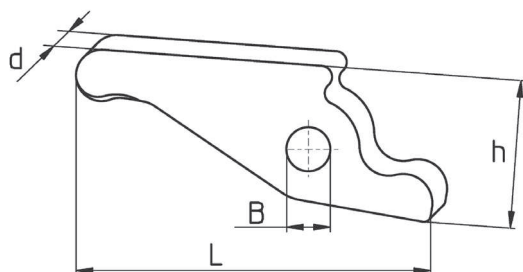
CHUCK LEVERS FOR LATHES

Dźwignie do automatów tokarskich

Chuck levers for lathes

Spannfinger

Рукоятка зажимного патрона для автоматов



Kod produktu Order Nr. Bestell-Nr. Код товара	Producent Manufacturer	Automat tokarski Automatic lathe	Nr identyfikacyjny Ident - Nr.	d (mm)	L (mm)	h (mm)	B (mm)	Kolek Pin
STA.005	STAR	JNC 25 / 32	052-32-070/090	14	69		8	8x58
STA.006	STAR	KJR 16	250-32-090/100	10	68		6	6x46
STA.007	STAR	KJR 16	252-32-070/090	8	34,4		6	6x31
STA.008	STAR	KJR 25	260-32-070/090	12	80		8	8x48
STA.009	STAR	KJR 25	262-32-070/090	12	80		8	8x48
STA.010	STAR	KJR 25 II	360-32-070/090	12	80		8	8x48
STA.011	STAR	KJR 25 II	362-32-080/100	12	80		8	8x48
STA.012	STAR	KNC 16/20	222-32-230/250	12	50		8	8x36
STA.013	STAR	KNC 16/20 m.Phase	220-32-070/090	12	77		8	8x48
STA.014	STAR	KNC 25/32	200-32-070/090	14	69	30	8	8x58
STA.015	STAR	KNC 25/32	202-32-230/250	12	50	25,5	8	8x36
STA.016	STAR	KNC 25/32 II	340-32-070/090	14	69		8	8x58
STA.017	STAR	KNC 25/32 II	342-32-230/250	12	50		8	8x36
STA.018	STAR	KNC 32 II	342-32-231/250	12	54		8	8x36
STA.019	STAR	RNC 16	210-32-060/080	10	68		6	6x46
STA.020	STAR	RNC 16	270-82-080/100	6	32,5		5	5x28,5
STA.021	STAR	RNC SR 32	342-32-231/250	12	54		8	8x36
STA.022	STAR	SA 16/12	460-32-100/120	10	68		6	6x46
STA.023	STAR	SA 16/12	460-82-080/100	8	39		6	6x31
STA.024	STAR	SB 16	460-82-080/100	8	39		6	6x31
STA.025	STAR	SH / SE / SB 16	400-32-100/120	10	68		6	6x46
STA.026	STAR	SH 7	410-32-100/120	8	56		6	6x34
STA.027	STAR	SNC 15	196-32-060/080	10	72,5		6	6x46
STA.028	STAR	SNC 25	091-32-060/080	14	85		8	8x58
STA.029	STAR	SR 10 J	460-82-080/100	8	39		6	6x31
STA.030	STAR	SR 10 J	690-83-070/090	5	40		6	7x30,5
STA.031	STAR	SR 16	310-32-090/100	10	68		6	6x46
STA.032	STAR	SR 16	312-32-070/090	8	39		6	6x31
STA.033	STAR	SR 16 R	540-39-100	10	67		8	8x50
STA.034	STAR	SR 20	322-32-070/090	12	50		8	8x36
STA.035	STAR	SR 20 R	540-84-050/070	12	57		8	8x36
STA.036	STAR	SR 20 R	540-39-600/620	10	67		8	8x50
STA.037	STAR	SR 20 RII	660-84-050	12	57		8	8x36
STA.038	STAR	SR 20 RII	660-39-600	10	67		8	8x50
STA.039	STAR	SR 20/32	330-32-090/100	12	80		8	8x48
STA.040	STAR	SR 32	332-32-090/110	12	54		8	8x36
STA.041	STAR	SR 32 J		12	67,6		8	
STA.042	STAR	SST 16	300-32-090/100	10	68		6	6x46

DŹWIGNIE DO AUTOMATÓW TOKARSKICH

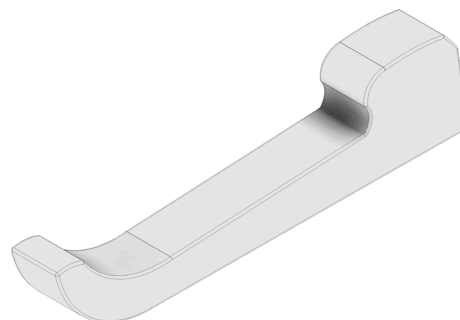
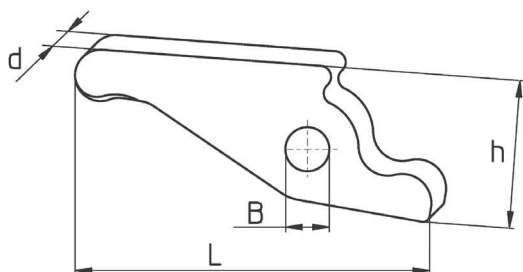
CHUCK LEVERS FOR LATHES

Dźwignie do automatów tokarskich

Chuck levers for lathes

Spannfinger

Рукоятка зажимного патрона для автоматов



Kod produktu Order Nr. Bestell-Nr. Код товара	Producent Manufacturer	Automat tokarski Automatic lathe	Nr identyfikacyjny Ident - Nr.	d (mm)	L (mm)	h (mm)	B (mm)	Kolek Pin
STA.043	STAR	SST 16	210-32-060/080	10	68		6	6x46
STA.044	STAR	SST 16	302-32-070/090	8	39	6		6x31
STA.045	STAR	SV 12	540-39-600/620	10	67		8	8x50
STA.046	STAR	SV 12	452-32-100/120	10	72		8	8x50
STA.047	STAR	SV 12	823-00-306	10	72		8	8x50
STA.048	STAR	SV 20		12	78		8	
STA.049	STAR	SV 32	440-32-090	12	80		8	8x48
STA.050	STAR	SV 32	430-32-090	12	80		8	8x48
STA.051	STAR	SV 32	442-32-090/110	12	62		8	8x36
STA.052	STAR	SW 7/R	380-32-130/150	8	56		6	6x34
STA.053	STAR	SW 7/R	382-32-110/130	8	56		6	6x34
STA.054	STAR	VNC 20 o.Phase	750-32-060/080	12	77		8	8x48
STA.055	STAR	VNC 20	749-21-180/190	8	34,4		6	6x31
STA.056	STAR	VNC 32	780-32-060/080	14	69		8	8x58
STA.057	STAR	SR 20 R	540-39-600/620					8x50
STR.001	STROHM	M45	680 297	5,9	44,2		4,5	
STR.002	STROHM	Stift/pin 4,5h6 x 26/ M45						
STR.003	STROHM	M 75-105, 125 AS	661 434	6,9	50,2	21		
STR.004	STROHM	M 125 NAR	661 435	6,9	50,2	21	6	
STR.005	STROHM		670 439					6x36
STR.006	STROHM	M 205-255 neu/new	661 557	13,8	92	26	8	
STR.007	STROHM		670 786					8x32
STR.008	STROHM	M 205-255 alt/old	680 733	11,8	90,6	31	9	
STR.009	STROHM		680 737					9x75
STR.010	STROHM	SN 25 Numura		13,9	95,7		1	
TOR.001	TORNOS	AS 14, SAS 16 Mainspindle	12 149	7,9	48		6	
TOR.002	TORNOS	AS 14, SAS 16 Gripper	24 17	4,9	32,4		4	
TOR.003	TORNOS	TV, T4	TV 45					
TOR.004	TORNOS	M 4	MF 3549	6	40,6			
TOR.005	TORNOS	M 4	MF 433	6	47		4	
TOR.006	TORNOS	M 4	MF 7817	6	50		4	
TOR.007	TORNOS	M 7	MD 265	6,8	58	18,3	5	
TOR.008	TORNOS	M 7 verstärkt/strengthened	MD 9705	6,9	62,6		5	
TOR.009	TORNOS	MS 7	MD 14103	6	62,7		5	
TOR.010	TORNOS	MS 7 Stopp/stop	MD 15825	7,9	64,1		5	
TOR.011	TORNOS	M 7	MD 15355	5,9	48,5		5	
TOR.012	TORNOS	M 10	MA 6469	6,9	60		5	
TOR.013	TORNOS	M 15	B 451	9	70,9	24,3	7	
TOR.014	TORNOS	M 20	J 51	12	90,9	30	8	

DŹWIGNIE DO AUTOMATÓW TOKARSKICH

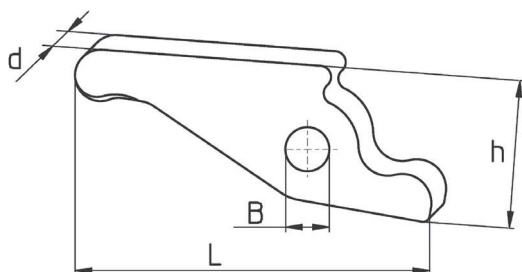
CHUCK LEVERS FOR LATHES

Dźwignie do automatów tokarskich

Chuck levers for lathes

Spannfinger

Рукоятка зажимного патрона для автоматов



Kod produktu Order Nr. Bestell-Nr. Код товара	Producent Manufacturer	Automat tokarski Automatic lathe	Nr identyfikacyjny Ident - Nr.	d (mm)	L (mm)	h (mm)	B (mm)	Kolek Pin
TOR.015	TORNOS	M 25	C 157	11,9	103	30	8	
TOR.016	TORNOS	R 10	5 RA 87	11,2	66			
TOR.017	TORNOS	R 10 neu/new	5 RA 87-06	11,4	69,8		7	
TOR.018	TORNOS	R 16	5 RB 5031	13,4	74,4	20		
TOR.019	TORNOS	RR 20	RB 5105	13,4	82,6			
TOR.020	TORNOS	R 7	RD 4039	9	54			
TOR.021	TORNOS	M7 mit Stopp/with stop	MA 4911	7	53			
TOR.022	TORNOS	RR 20-01	RB 5105-01	13,5	82			
TOR.023	TORNOS	NA 12, NA 153	098 098	9	55	21,3	6	
TOR.024	TORNOS	G 85	MR 28-32	14	109		9	
TOR.025	TORNOS	ENC 164	810 965	10	36		5	
TOR.026	TORNOS	BS 20	045 397	11,95	39,5		5,95	
TOR.027	TORNOS	BS 20 8 SPR	096 900	4,92	34,9		4	
TOR.028	TORNOS	MTH Fräseinheit	4/MT 359					
TRA.001	TRAUB	A 15	630 030	8,8	61,7	17		
TRA.002	TRAUB	A 15-20-25	632 192	10	68,9	18		
TRA.003	TRAUB	A 25, TC 15	616 112	12	68,9	18		
TRA.004	TRAUB	A 26-36	632 202	14	68,7			
TRA.005	TRAUB	A 42-60	630 950	14	68,7			
TRA.006	TRAUB	T 30-42-60	632 521	15,9	84			
TRA.007	TRAUB	TB 42-60-80, TK, TF	614 194	17,9	84,7	22		
TRA.008	TRAUB	TB 42-60 with roll	614 194 / 627 184	17,9	84,7	22		
TRA.009	TRAUB	TD 16 -26-36	691 325	12	74	18,3		
TRA.010	TRAUB	TG (4 pieces/set)	675 609	12	74			
TRA.011	TRAUB	AH 36	629 045	10	73,2			
TRA.012	TRAUB	TNL 16 (2 pieces/set)	773 075	9,9	61,1			
TRA.013	TRAUB	TNS 26 (3 pieces/set)	738 508	9,9	61,1			
TRA.014	TRAUB	TNC 30	738 405	9,9	61,1			
WIC.001	WICKMANN	3 1/4 "	501 V 138 HA/38					
WIC.002	WICKMANN	2 1/4 ", 1 3/4", 1 3/8 "	301 V 104 0	27,8	100	35,7	14,28	
WIC.003	WICKMANN	2 1/4"	3539 D					
WIC.004	WICKMANN	1 "	101 V 104 0	18,25	77	11,11	26,1	
WIC.005	WICKMANN	5/8 "	401 X 104 A	18,25	56,35	19,2	7,93	